

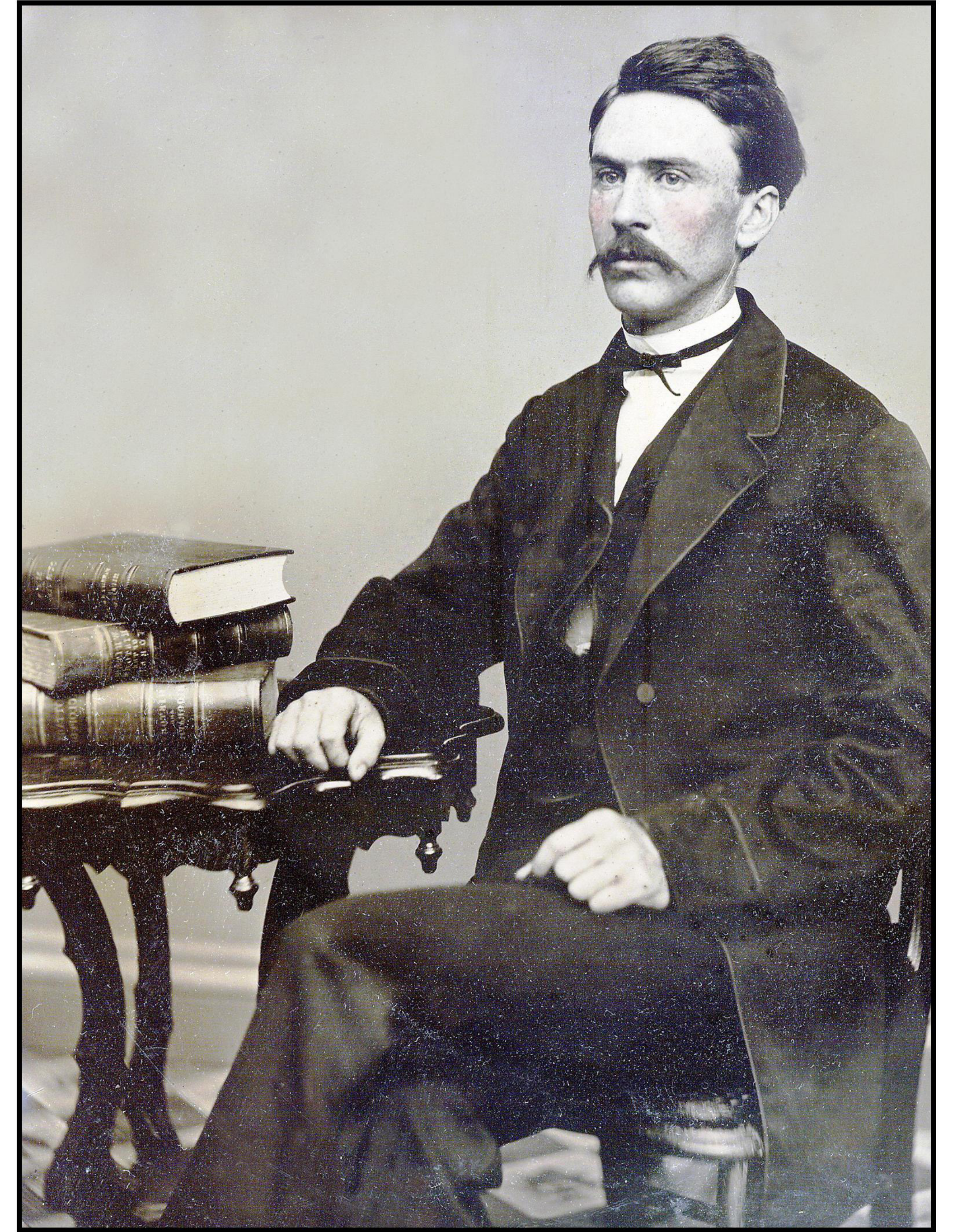
# John Bernard Crouse

*Born in a log cabin, he became a captain of industry*

On November 29, 1842, John Bernard Crouse was born in Hartland Center, Michigan, to Robert Crouse and Mary Sample Crouse, who had come to Michigan from New York in 1832. John was the second of six children; with an older brother and four younger sisters. He attended schools in Hartland and Ann Arbor, probably finishing with a high school equivalency. He worked in his father's general store where he learned the rudiments of accounting and on his father's farm where he learned about raising cattle and crops.

J. B. married Betsey Westfall on January 15, 1863, in Argentine, Michigan. Their first child, Robert Westfall Crouse, who died at age two, was born March 26, 1864. In 1868, J. B. purchased a gristmill in Highland, Michigan. The following year his father died and John continued to run the general store in Hartland with the assistance of Reuben Sample, his mother's nephew. In 1869, he bought a general store and a cider mill on Pettibone Creek, which ran through Highland. This mill produced cider and vinegar and also generated electrical power which J. B. sold, earning enough for him to buy the surrounding farmland adjacent to Pettibone

Creek. J. B. and Betsey's second and only surviving child, John Robert Crouse, was born January 1, 1874.



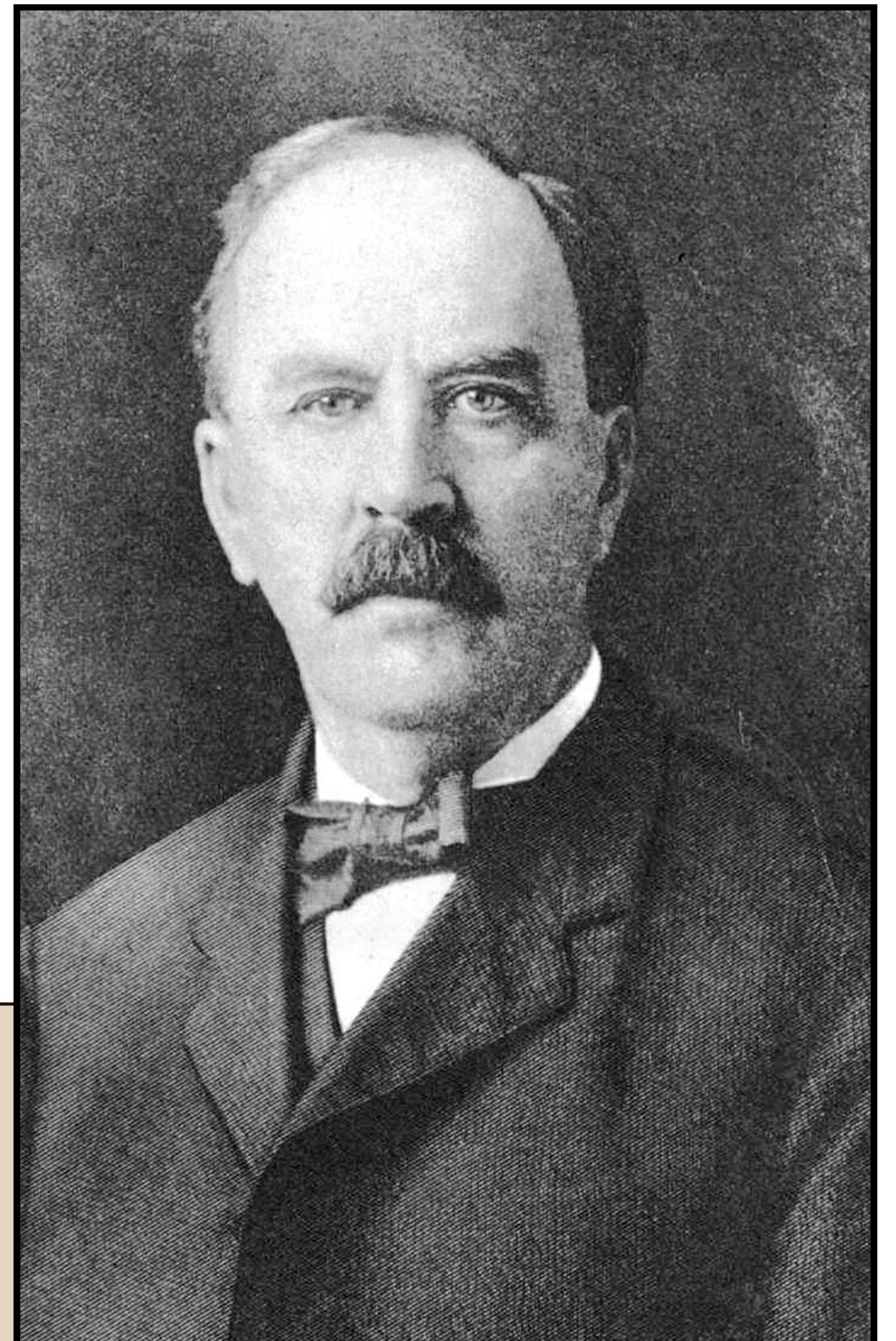
In 1875, J. B. Crouse, who was then the Highland postmaster, discontinued the general store operation. In about 1880, the Crouses moved to Highland where they had a home. That same year J. B. built a pickle works which produced sixty barrels a day at full production. In 1882, John's brother-in-law, Henry A. Tremaine, became a partner in the Highland Pickle Works which remained in business another four years. While in Highland, land owned by J. B. and Betsey was developed into the first subdivision, and they donated property for building a Methodist Episcopal Church.

In 1888, the Crouse family left Highland for Cleveland, Ohio, where J. B. and Henry worked for the Cleveland Carbon Company. In April 1893, they left Cleveland to start their own carbon plant in Fostoria, Ohio, where free natural gas was available from the city. The

Fostoria plant was known as the Crouse-Tremaine Carbon Co. and produced carbon points, used principally in street lights and later in moving picture projectors.

Betsey died in Fostoria on November 6, 1893. From 1888 to 1916, John partnered with other family members in successful businesses that included electrical, automotive, glass making, refrigeration, and dairy interests.

John Bernard Crouse died in Cleveland November 6, 1921. His funeral was held in Highland, Michigan with burial in the Hartland Cemetery. His second wife, Edith, passed away nine years later.



*In this interior photo of J.B.'s Fostoria house, note the portrait of his mother, Mary Sample Crouse, on the wall.*

